

Technical data sheet GEOPANEL INTERNAL CORNER

1. DESCRIPTION

GEOPANEL is an easy and intuitive system of modular formwork in technopolymer ABS used to build walls, foundations and columns in concrete. The wide range makes it easy to produce structures of any size and shape.



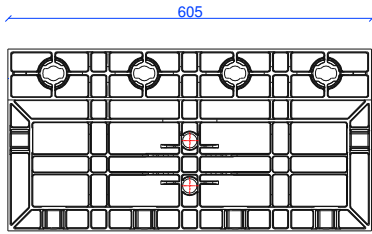
2. TECHNICAL CHARACTERISTICS

Material	-	Acrylonitrile butadiene styrene (ABS)
Colour	-	Black
Dimensions	mm	300 x H600 x 80
Actual dimensions	mm	303 x H605 x 80
Weight	kg	3.86
Thermal expansion coeff.	(mm/m/°C)	0.14
Compression resistance during the pour	(kN/m ²)	60
Holes number for handles	-	5
Panel perforation for rolled bar	-	Yes (2 holes, per bar Ø17mm)
Place of manufacture	-	Italy

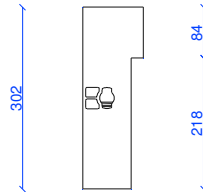
3. LOGISTICAL INFORMATION

Art. code	-	EGPPANGI0060
Code composition		1 panel INTERNAL ANGLE 2 caps 25mm (replacement code EGATADI0000) 4 caps 43mm (replacement code EGATADI0043)
Packaging dimensions	cm	81 x 121 x H240
Type of packaging	-	Stacked in pallets and wrapped in plastic film
Quantity for packaging	pz	128
Packaging weight (with pallet)	kg	510

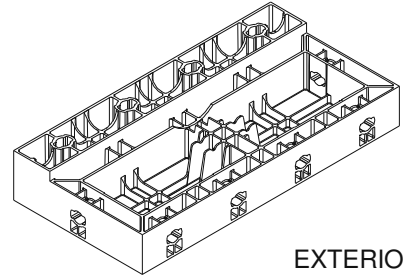
4. TECHNICAL LAYOUT



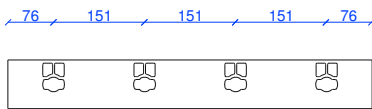
EXTERIOR VIEW



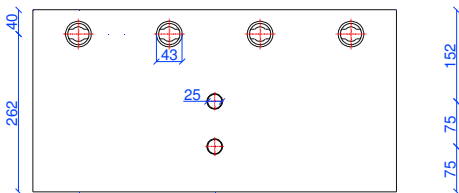
SIDE VIEW



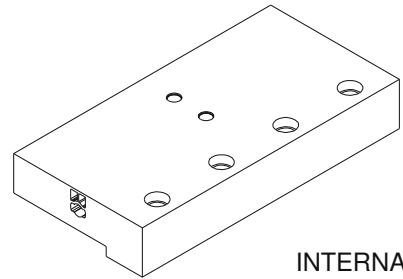
EXTERIOR ISOMETRIC VIEW



TOP VIEW



INTERNAL VIEW



INTERNAL ISOMETRIC VIEW