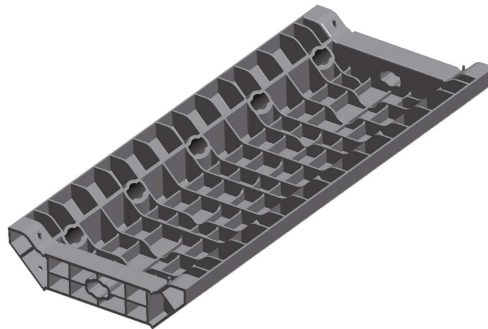


# Technical data sheet GEOTUBPANEL (from 200mm to 400mm)

## 1. DESCRIPTION

GEOTUBPANEL is an easy and intuitive system of modular formwork in technopolymer ABS used to build columns in concrete. The wide range makes it easy to produce structures of any size and shape.



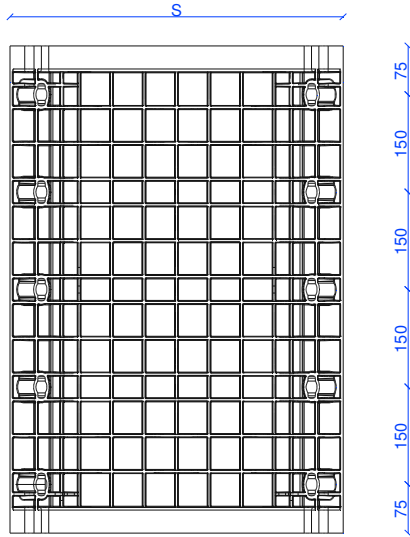
## 2. TECHNICAL CHARACTERISTICS

Material	-	Acrylonitrile butadiene styrene (ABS)
Colour	-	Black
Dimensions L20	mm	200 x H750
Dimensions L23	mm	230 x H750
Dimensions L25	mm	250 x H750
Dimensions L30	mm	300 x H750
Dimensions L35	mm	350 x H750
Dimensions L40	mm	400 x H750
Weight L20	kg	3.05
Weight L23	kg	3.36
Weight L25	kg	3.41
Weight L30	kg	3.81
Weight L35	kg	4.58
Weight L40	kg	5.18
Thermal expansion coeff.	(mm/m/°C)	0.14
Compression resistance during the pour	(kN/m <sup>2</sup> )	60
Holes number for handles L20	-	6
Holes number for handles L23-30	-	7
Holes number for handles L35-40	-	8

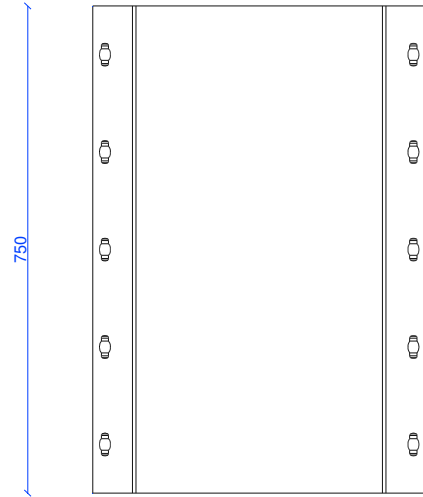
### 3. LOGISTICAL INFORMATION

Art. code L20	-	EGTPANE2075
Art. code L23	-	EGTPANE2375
Art. code L25	-	EGTPANE2575
Art. code L30	-	EGTPANE3075
Art. code L35	-	EGTPANE3575
Art. code L40	-	EGTPANE4075
Packaging dimensions L20	cm	75 x 120 x H210
Packaging dimensions L23	cm	75 x 120 x H220
Packaging dimensions L25	cm	75 x 120 x H203
Packaging dimensions L30	cm	75 x 120 x H230
Packaging dimensions L35	cm	75 x 120 x H213
Packaging dimensions L40	cm	75 x 120 x H213
Type of packaging	-	Stacked on pallet
Quantity for packaging L20	pz	112
Quantity for packaging L23	pz	114
Quantity for packaging L25	pz	96
Quantity for packaging L30	pz	96
Quantity for packaging L35	Pz	80
Quantity for packaging L40	pz	80
Packaging weight (with pallet) L20	kg	357
Packaging weight (with pallet) L23	kg	399
Packaging weight (with pallet) L25	kg	343
Packaging weight (with pallet) L30	kg	381
Packaging weight (with pallet) L35	kg	382
Packaging weight (with pallet) L40	kg	430

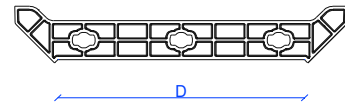
**4. TECHNICAL LAYOUT**



EXTERIOR VIEW



INTERNAL VIEW



TOP VIEW