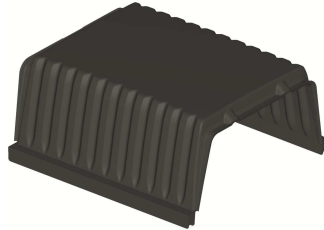


# Technical data sheet SKYRAIL H16

## 1. DESCRIPTION

ABS reusable formwork for monodirectional lightening slab



## 2. TECHNICAL SPECIFICATIONS

Material	-	Acrylonitrile butadiene styrene (ABS)
Percentage of recycled material	%	100
Colour	-	Black
Dimensions *	cm	56 x 60 H16
Weight	kg	2.14 (± 10%)
Installation/dismantling time**	min/m <sup>2</sup> /2 workers	5/2
Punching resistance	daN	150
Fire resistance***	-	REI 90 / RE180
Place of production	-	Italy

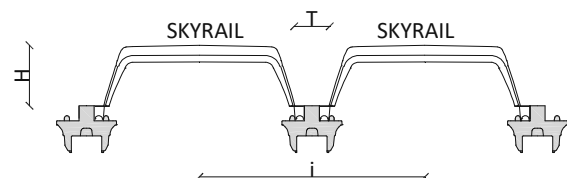
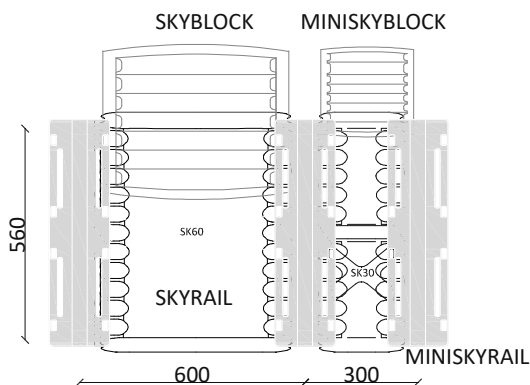
\* in consideration of the recycled material, the measures should be evaluated with a tolerance of ± 1,5%

\*\* The laying times of the complete slab are subject to considerable variations depending on the amount of reinforcement and the working conditions of the workers.

\*\*\* test carried out on a slab, according to UNI EN 1363-1:2001 and UNI EN 1365-2:2002, with Skyrail® H24 system and an upper slab of 7cm, plus a monodirectional false ceiling made by gypsum (like Ignilastra F15 GFK)

## 3. CHART OF INCIDENCE PER SQUARE METRE (room 4x6m)

	Skyrail dimensions (mm)	Beam width (t) mm	Interax (l) mm	Skyrail incidence pz/m <sup>2</sup>	Beams incidence pz/m <sup>2</sup>	Skyblock incidence pz/m <sup>2</sup>
SKYRAIL H16	560 x 600	90	600	2.50	2.25	0.85



#### 4. CONCRETE CONSUMPTIONS CHART

	Concrete consumptions up to formwork's satin m <sup>3</sup> /m <sup>2</sup>	Slab (mm)	Total concrete consumption m <sup>3</sup> /m <sup>2</sup>	Slab weight kg/m <sup>2</sup>
SKYRAIL H16	0.037	40	0.077	192.50
		50	0.087	217.50
		60	0.097	242.50

#### 5. TECHNICAL SUPPORT

Geoplast Technical Unit is at the disposal of architects and engineers to offer the required assistance during the implementation of a project. From the statistical calculations to the working drawings.

- **FEASIBILITY STUDY:** Technical Analysis of the project which includes the choice of the most suitable product.
- **PRELIMINARY DESIGN:** Static analysis and preparation of documentation attesting to the reliability of the performance of the proposed system.

**EXECUTIVE DESIGN AND ON-SITE ASSISTANCE:** Support of specialized designers. A detailed analysis with installation diagrams and/or on-site support can be provided on request.

#### 6. PACKAGING AND TRANSPORT

Product code	-	EGSKYRA0016
Code composition	-	1 formwork SKYRAIL H16
Packaging size	cm	110 x 125 x H230
Type of packaging	-	Stacked and wrapped with plastic film on pallet
Quantity per pallet	pz	208
Packaging gross weight*	kg	463

\* weight may change by (± 10%)