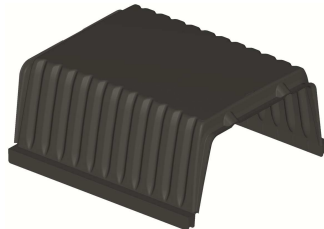


Technical data sheet SKYRAIL H20

1. DESCRIPTION

ABS reusable formwork for monodirectional lightening slab



2. TECHNICAL SPECIFICATIONS

Material	-	Acrylonitrile butadiene styrene (ABS)
Percentage of recycled material	%	100
Colour	-	Black
Dimensions *	cm	56 x 60 H20
Weight	kg	2.52 (± 10%)
Installation/dismantling time**	min/m ² /2 workers	5/2
Punching resistance	daN	150
Fire resistance***	-	REI 90 / RE180
Place of production	-	Italy

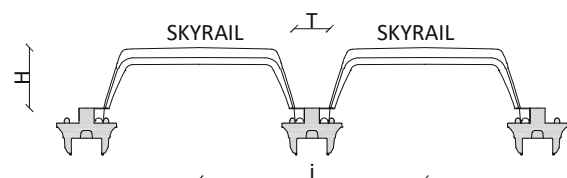
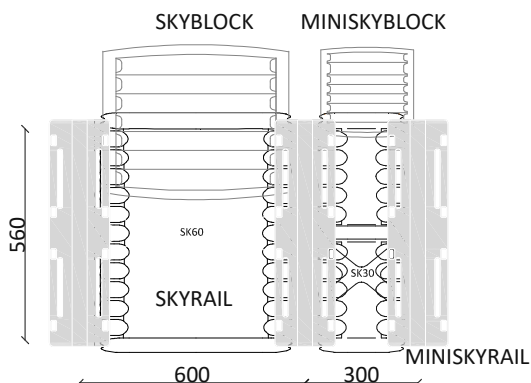
* in consideration of the recycled material, the measures should be evaluated with a tolerance of ± 1,5%

** The laying times of the complete slab are subject to considerable variations depending on the amount of reinforcement and the working conditions of the workers.

*** test carried out on a slab, according to UNI EN 1363-1:2001 and UNI EN 1365-2:2002, with Skyrail® H24 system and an upper slab of 7cm, plus a monodirectional false ceiling made by gypsum (like Ignilastra F15 GFK)

3. CHART OF INCIDENCE PER SQUARE METRE (room 4x6m)

	Skyrail dimensions (mm)	Beam width (t) mm	Interax (l) mm	Skyrail incidence pz/m ²	Beams incidence pz/m ²	Skyblock incidence pz/m ²
SKYRAIL H20	560 x 600	90	600	2.50	2.25	0.85



4. CONCRETE CONSUMPTIONS CHART

	Concrete consumptions up to formwork's satin m ³ /m ²	Slab (mm)	Total concrete consumption m ³ /m ²	Slab weight kg/m ²
SKYRAIL H20	0.055	40	0.095	237.50
		50	0.105	262.50
		60	0.115	287.50

5. TECHNICAL SUPPORT

Geoplast Technical Unit is at the disposal of architects and engineers to offer the required assistance during the implementation of a project. From the statistical calculations to the working drawings.

- **FEASIBILITY STUDY:** Technical Analysis of the project which includes the choice of the most suitable product.
- **PRELIMINARY DESIGN:** Static analysis and preparation of documentation attesting to the reliability of the performance of the proposed system.

EXECUTIVE DESIGN AND ON-SITE ASSISTANCE: Support of specialized designers. A detailed analysis with installation diagrams and/or on-site support can be provided on request.

6. PACKAGING AND TRANSPORT

Product code	-	EGSKYRA0020
Code composition	-	1 formwork SKYRAIL H20
Packaging size	cm	110 x 125 x H232
Type of packaging	-	Stacked and wrapped with plastic film on pallet
Quantity per pallet	pz	204
Packaging gross weight*	kg	531

* weight may change by (± 10%)