

BIOMODULO - Composting BIOCELL COMPOSTING PLANT

Location: Lucera, Italy

Customer: Ecoagrimm Srl

Designer: Idroengineering Srl

Total surface: 6 biocells x 100 m²

Project: biomass treatment

Product used: BIOMODULO

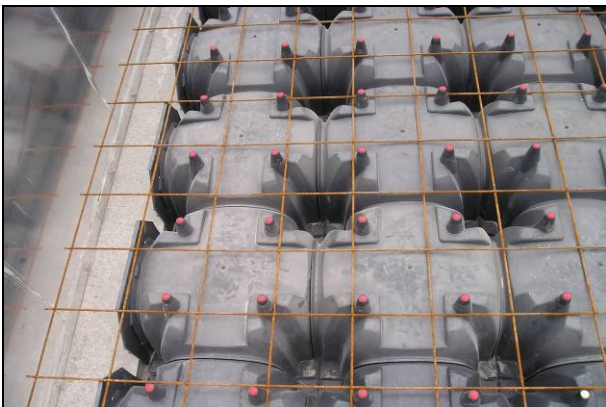


Fig. 1
Biomodulo installed and ready for the pour



Fig. 2
Detail of the inspection channel



Fig. 3
Finished floor of a biocell



Fig. 4
Completed composting plant

The composting plant treats biomass coming from the food industry waste and water-treatment plant sludges, producing a stabilised fertiliser. The process is of the aerobic type with high load fermentation in closed biocells, followed by ventilated maturing and final refining.